



The Ultimate  
Driving Machine



# THE 3

SALOON PRICE LIST  
FROM JULY 2019

**BMW EFFICIENT DYNAMICS.**  
LESS EMISSIONS. MORE DRIVING PLEASURE.



CONTENTS.

Page 1	Contents
Page 2	The new BMW 3 Series Saloon Introduction
Page 3	Exterior Equipment Highlights
Page 4	Interior Equipment Highlights
Page 5	Model Range – M Sport Highlights
Page 7	Model Range – Sport Highlights
Page 8	Model Range – SE Highlights
Page 9	The new BMW 330e Saloon
Page 11	Packages
Page 15	Technical Information
Page 16	Pricing Information
Page 17	BMW ConnectedDrive
Page 19	BMW EfficientDynamics / Paintwork / Upholstery / Interior Trims
Page 21	Transmissions / Steering and Chassis / Exterior Equipment / Interior Equipment
Page 23	Packages
Page 25	Safety and Technology
Page 27	Audio and Communication
Page 29	Light Alloy Wheels / 360° ELECTRIC
Page 31	BMW Pay Monthly Servicing & Trackstar
Page 33	BMW M Performance Accessories
Page 35	The new BMW M340i xDrive Saloon
Page 37	Code Glossary
Page 38	BMW ConnectedDrive Services

[www.bmw.co.uk/new3series](http://www.bmw.co.uk/new3series)



Personalise and buy your perfect BMW online. Find out more at [www.bmw.co.uk/online-sales](http://www.bmw.co.uk/online-sales)

THE NEW BMW 3 SERIES SALOON.

For over 40 years the BMW 3 Series has been the ultimate driver’s car. Perfectly combining advanced engineering and expert craftsmanship, the new BMW 3 Series Saloon simply doesn’t understand the meaning of the word compromise. Now in its seventh generation, this vehicle continues its legacy and takes driving pleasure to new heights. Unrivalled dynamics, improved steering and responsiveness, combined with distinctive design evokes a thoroughly breathtaking driving experience.

With the new BMW 3 Series Saloon you are now more connected than ever before thanks to the new BMW ConnectedDrive offering. Tailored exclusively for M Sport models, the BMW Live Cockpit Professional now introduces the Intelligent Personal Assistant. Through touch, or Voice Control, you can now interact with your BMW in a revolutionary way that has the ability to learn your driving preferences.

Don’t be driven by technology – drive it.

BMW EFFICIENT DYNAMICS.

EfficientDynamics is BMW’s award-winning programme of technologies designed to reduce CO<sub>2</sub> emissions and improve fuel economy, without compromising on performance or driving dynamics. These technologies are standard on every new BMW and could lower your fuel and tax costs, as well as ensure a lower benefit in kind tax rating for company car drivers. You can find out more about the benefits of BMW EfficientDynamics, as well as compare your own vehicle against any BMW 3 Series Saloon model at [www.bmw.co.uk/EfficientDynamics](http://www.bmw.co.uk/EfficientDynamics)



Brake Energy Regeneration



ECO PRO Mode



Electric Power Steering



BMW EfficientLightweight



Tyres with reduced rolling resistance



High-precision direct injection

**BMW EFFICIENT DYNAMICS.**  
LESS EMISSIONS. MORE DRIVING PLEASURE.





## EXTERIOR.

With its elegant roofline flowing into the boot lid, the new BMW 3 Series Saloon is the embodiment of a true driver's car. The re-designed exterior features the iconic BMW Kidney grille that is now joined at the front. M Sport models also feature a dynamic set of design cues with larger air intakes and outlets in the front and rear bumpers.

An extensive range of optional exterior colours, upholsterys and alloy wheels enables you to reflect your own personality for a true BMW experience. With a choice of SE, Sport and M Sport models, each providing a generous standard specification, you can be sure there is a model to suit you.

As part of the Visibility package, the new BMW 3 Series Saloon includes optional BMW Laserlights for the first time ever on the 3 Series, comprising both laser technology for enhanced light intensity and wide illumination without glaring other road users. Doubling the range of other headlights, BMW Laserlights allow you to see up to 500 metres in front, increasing safety and making it perfectly apt for night-time driving.



## INTERIOR.

Inside the new BMW 3 Series Saloon the driver-focused centre console enables an especially comfortable drive: combined with intelligent driver assistance systems such as the optional Head-up Display, which is exclusively available on M Sport models with the Technology package, it makes every drive safer and more enjoyable.

Shown here is the Vernasca leather upholstery in Black with Blue highlights, which is standard for M Sport models and only available in combination with the optional Sensatec dashboard. This upholstery is perfectly complemented by the standard Aluminium Tetragon interior trim with Pearl Chrome highlight that extend into the inside of the doors. The standard Ambient lighting also adds a premium touch to the interior and allows a dynamic light flow throughout the new BMW 3 Series Saloon, providing a luxurious atmosphere for any drive.

The innovative technologies available such as the latest generation BMW Operating System 7.0, standard Live Cockpit Professional (for M Sport models) and optional Enhanced Bluetooth with wireless charging (for M Sport models), confirm how the intuitive BMW 3 Series Saloon is leading the way in technology, comfort and driving experience.





# MODEL RANGE.



The new BMW 3 Series Saloon is available in a variety of engine and model variants, each providing a different level of standard specification. Below highlights some of the equipment differences between them. For further details, please contact your local BMW Retailer.

### M Sport Highlights

In addition / replacement to SE models

- 18" M light alloy Double-spoke style 790 M wheels, Bicolour Orbit Grey
- BMW Live Cockpit Professional, comprising:
  - 12.3" Control Display with Touch Function
  - BMW Emergency Call
  - BMW Navigation system
  - BMW Operating System 7.0
  - BMW TeleServices
  - Intelligent Personal Assistant
- Connected Package Professional, comprising:
  - Apple CarPlay® preparation
  - Connected Navigation
  - Concierge Services
  - Connected Teaser: Connected Music, In-Car Experiences, Microsoft Office 365
  - Intelligent Functionalities
  - Real Time Traffic Information
  - Remote Services
- Exterior trim, High-gloss Shadowline
- Gear selection lever with M-specific designation (manual transmission only)

- Headlining, Anthracite
- Interior trim, Aluminium Tetragon
- Larger fuel tank, total of 59 litres
- M aerodynamics bodystyling
- M designation on front side panels, left and right
- M Leather steering wheel
- M Sport braking system (exclusively for 330i / 330d)
- M Sport suspension
- Seat heating, front
- Sports seats, front
- Vehicle key with M-specific designation
- Vernasca leather upholstery



The new BMW 3 Series M Sport Saloon with M Sport Plus package, including 19" M light alloy Double-spoke style 791 M wheels, is shown above see page 23-24 for further package details.

3 Series M Sport Saloon	RRP from £34,360 inc. VAT	+ £2,900 over SE
3 Series M Sport Plus Saloon	RRP from £36,560 inc. VAT	+ £2,200 over M Sport

The models shown on these pages may feature optional equipment. Standard equipment may also vary depending on engine variant. Please contact your local BMW Retailer for further details.



MODEL RANGE

Sport Highlights In addition / replacement to SE models

- 18" light alloy V-spoke style 780 wheels, Bicolour Orbit Grey with run-flat tyres
- Aluminium door sill finishers in the front with BMW designation
- Exterior trim, High-gloss Shadowline
- Front and rear bumper with specific design elements in Black, High-gloss
- Larger fuel tank, total of 59 litres
- Roof mouldings in body colour
- Seat heating, front
- Sports seats, front
- T-shaped design element right and left in Black, High-gloss
- Vernasca leather upholstery



3 Series Sport Saloon	RRP from £32,860 inc. VAT	+ £1,400 over SE
-----------------------	---------------------------	------------------

The new BMW 3 Series Sport Saloon model is shown above in Mineral White metallic paint.

SE Highlights

- 17" light alloy V-spoke style 778 wheels
- Active Air Stream Kidney grille, Chrome frame with eight Black, High-gloss vertical slats
- Active Guard Plus
- Adaptive LED headlights
- Air conditioning, automatic with three-zone control
- Ambient lighting with light carpet
- Anthracite cloth upholstery
- Automatic transmission (320i only)
- Bluetooth hands-free facility with USB audio interface
- BMW Emergency call
- BMW Online Services
- BMW Live Cockpit Plus, comprising:
  - 8.8" Control Display with Touch Function
  - BMW Connected+
  - BMW Navigation system
  - BMW Operating System 6.0
  - BMW TeleServices
  - iDrive controller with Touch Function
  - Map updates
- Brake lights with LED technology, Dynamic
- Connected Package Plus, comprising:
  - Apple CarPlay® preparation
  - Concierge Services
  - Connected Teaser: Microsoft Office 365
  - Real Time Traffic Information
  - Remote Services
- Cruise control with braking function
- DAB tuner
- Eight-speed sport automatic transmission with gearshift paddles (320d xDrive / 330d / 330i only)
- Manual transmission (318d / 320d only)
- Exhaust tailpipes – split, left and right
- Exterior mirrors – electrically folding with anti-dazzle
- Exterior trim, Matt Black
- Floor mats, velour
- Interior trim, Black, High-gloss with Pearl Chrome finisher
- Rain sensor with automatic headlight activation and windscreen wiper control
- Sport multi-function steering wheel, three-spoke
- Tyre pressure monitoring
- Park Distance Control (PDC), front and rear
- Parking Assistant with Reversing Camera



3 Series SE Saloon	RRP from £31,460 inc. VAT	
3 Series SE Plus Saloon	RRP from £32,110 inc. VAT	+ £650 over SE

The new BMW 3 Series SE Saloon is shown above in Melbourne Red metallic paint.



# THE NEW BMW 330e SALOON.

The new BMW 330e Saloon features innovative BMW eDrive and EfficientDynamics technologies which provide impressive levels of performance and efficiency. This model brings the benefits of a Plug-in Hybrid Electric Vehicle (PHEV) such as a low CO<sub>2</sub> figure from 37-38g/km and a combined fuel consumption of up to 201.8mpg, but with the dynamic ability and acceleration of a high performance 3 Series Saloon using a combination of electric and petrol drivetrains. In eDrive mode the BMW 330e Saloon can travel up to between 39-41 miles on electric power alone.



3 Series 330e Saloon

RRP from £36,970 inc. VAT

The new BMW 330e Saloon is shown above in Mineral White metallic paint.



# PACKAGES.

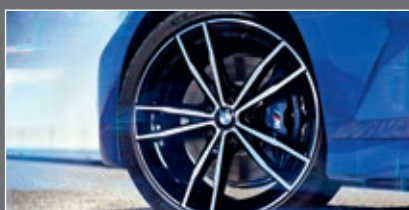
BMW packages, in the new BMW 3 Series Saloon, are designed to create greater convenience, functionality, desire and comfort on any drive. With options ranging from the utmost in advanced headlight technologies to the comfort of keyless access, this generous selection of combinations will enhance any journey in your new BMW 3 Series Saloon.



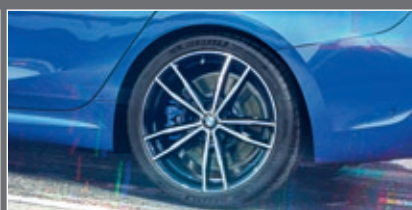
## M SPORT PLUS PACKAGE.

£2,200

Enhance your new BMW 3 Series M Sport Saloon with the M Sport Plus package. This pack enhances the vehicle through a selection of visual and performance upgrades to deliver the ultimate BMW experience.



19" M light alloy Double-spoke style 791 M wheels, Bicolour Jet Black with run-flat tyres.



**Adaptive M suspension** offers a softer "Comfort" and a more engaging "Sport" suspension set-up. The driver can select the perfect ride depending on the situation and road conditions.



The **BMW Individual High-gloss Shadowline exterior trim** with extended contents includes the Kidney grille frame and struts in High-gloss Black and tailpipe finishers in Black Chrome.



The **M seat belts** with belt boast an exquisite woven highlight in the classic M colours.



Emphasising the athletic silhouette of the BMW 3 Series Saloon, the **M rear spoiler** reduces unwanted lift and provides a thoroughly sporty design.



The **Sun protection glass** prevents the interior from heating up when exposed to direct sunlight and offers an appealing window tint for the rear screen and rear side windows.



The **M Sport braking system** offers better cooling and more effective braking performance. Included in M Sport Plus package for 320i, 320d and 320d xDrive models.



Available for 330i and 330d models, the **M Sport differential** improves traction, agility, stability and driving behaviour depending on the driving situation and road surface conditions.

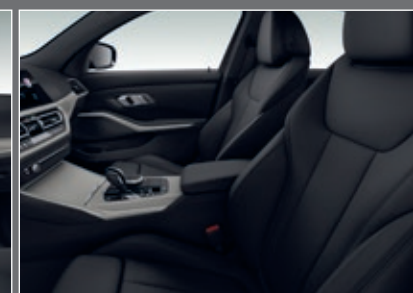
## SE PLUS PACKAGE.

£650

Exclusively available for SE models, the SE Plus package allows the driver to enhance the interior feel of the vehicle. Relax against the Black Sensatec upholstery with heated front seats.



The **Black Sensatec upholstery** provides a comfortable cabin experience within SE models.



The **seat heating for driver and front passenger** provides pleasant warmth, adjustable in three levels.



Increasing volume by 19 litres to 59 litres, the **larger fuel tank** allows a significantly longer distance between refuelling. The capacity of the AdBlue tank is also increased by 8.5 litres to a total of 18.9 litres.

## TECHNOLOGY PACKAGE.

£1,300 – £1,900

Offering the latest innovations, the Technology package is the perfect companion on any journey. From the ability to charge your phone wirelessly, to the convenience of relevant driving information projected onto the windscreen, this package combines functionality with the latest BMW technology just for you.



The **Head-up Display** is now larger than ever, measured at 11.5", it projects information relevant to the journey on the windscreen. Receive navigation instructions, speed limit and relevant traffic sign details plus selected driving assistance functionality details in to your immediate field of vision.



Shown above, the **harman/kardon loudspeaker system** is available for M Sport models as part of the package. For SE and Sport models, the BMW Advanced loudspeaker system becomes available.



**Enhanced Bluetooth with wireless charging** enables a more advanced Bluetooth connectivity for two mobile phones at the same time and the technical capacity for a WiFi hotspot.



With **BMW Gesture Control**, you can operate certain functions of the Central Instrument Display (CID) through predefined hand movements. For example, gestures such as 'swiping' or 'pointing' for accepting or rejecting an incoming call or circular motions of the index finger to adjust volume.<sup>1</sup>



## PACKAGES.



## VISIBILITY PACKAGE.

£1,500

Intelligently combining the most advanced BMW headlight technologies, the Visibility package delivers an extremely innovative headlight system that ensures maximum illumination of the road ahead without glaring other road users. Striking iconic daytime running lights with Blue laser diodes gives the car its most appealing visual appearance.



Illuminating the road, the **BMW Laserlights** extend the maximum headlight range in high-beam mode to over 500 metres. Accompanied by the **High-beam Assistant**, BMW Selective Beam supports driving in the dark by automatically adjusting the high-beam headlights in response to the traffic situation to avoid dazzling other road users.

## PREMIUM PACKAGE.

£1,700

For a luxurious driving experience, the Premium package is the perfect companion. Including a stunning Electric glass sunroof, which is 10cm larger than its predecessor, this feature allows for more light to enter the cabin than ever before. The memory function in the driver's seat remembers your preferred seat and mirror position.



The **glass sunroof** and headlining are electrically operated and have an integrated wind deflector.



The **lumbar support** for the front seats can be adjusted both vertically and laterally, allowing the driver and passenger to achieve perfect seating comfort. The **electric seat adjustment** is easy to use and allows you to move the seat height, position, base tilt and backrest tilt, while the **memory function** lets you save your preferred settings.

## COMFORT PACKAGE.

£990

The Comfort package combines convenient and innovative functionality with pure comfort. You can now access your car with greater ease and keyless entry thanks to the Automatic tailgate and Comfort Access. With additional and practical storage compartments, generous space and storage options can be utilised for your convenience in the new BMW 3 Series Saloon.



**Comfort Access** can automatically lock or unlock the vehicle as you leave or approach it without using the key. A Digital key using a compatible card or selected smartphone with NFC technology can also be used for accessing the vehicle. The Digital Key is not available in combination with a manual gearbox.



**Extended Storage** includes a range of practical additional compartments, sockets, nets and hooks allowing for easier and convenient storage purposes.



At the touch of a button, the **steering wheel heating** can be activated. The steering wheel rim quickly heats up to a pleasant temperature to provide extra comfort especially in the winter.



**Automatic tailgate** operation allows electric opening and closing of the tailgate by simply pressing the relevant button. The tailgate can also be opened with the key or by a quick wave of the foot under the rear bumper.



THE NEW BMW 3 SERIES SALOON.

TECHNICAL INFORMATION.

Model	Power output (hp)	0-62mph (secs)	Fuel consumption – combined (mpg / l/100km)*	CO <sub>2</sub> emissions – combined (g/km)*	
PETROL				Wheel cluster 1*	Wheel cluster 2*
320i SE	184	(7.1)	(44.1-42.2) / (6.4-6.7)	(124)	(127)
320i Sport	184	(7.1)	(42.8-41.5) / (6.6-6.8)	(124)	(127)
320i M Sport	184	(7.1)	(42.8-40.9) / (6.6-6.9)	(124)	(127)
320i xDrive SE	184	(7.6)	(42.2-40.4) / (6.7-7.0)	(134)	(136)
320i xDrive Sport	184	(7.6)	(40.9-39.8) / (6.9-7.1)	(134)	(136)
320i xDrive M Sport	184	(7.6)	(40.9-39.2) / (6.9-7.2)	(134)	(136)
330i Sport	258	(5.8)	(41.5-40.4) / (6.8-7.0)	(134)	(139)
330i M Sport	258	(5.8)	(41.5-38.7) / (6.8-7.3)	(134)	(139)
330e SE	184	(5.9)	(201.8-188.3) / (1.4-1.5)	(37)	(38)
330e Sport	184	(5.9)	(201.8-176.6) / (1.4-1.6)	(37)	(38)
330e M Sport	184	(5.9)	(201.8-176.6) / (1.4-1.6)	(37)	(38)

DIESEL				Wheel cluster 1^	Wheel cluster 2^
318d SE	150	8.4 (8.3)	58.9-55.4 (55.4-52.3) / 4.8-5.1 (5.1-5.4)	113 (109)	116 (112)
318d Sport	150	8.4 (8.3)	56.5-54.3 (53.3-52.3) / 5.0-5.2 (5.3-5.4)	-	116 (112)
318d M Sport	150	8.4 (8.3)	56.5-53.3 (53.3-51.4) / 5.0-5.3 (5.3-5.5)	-	116 (112)
320d SE	190	7.1 (6.8)	56.5-54.3 (55.4-53.3) / 5.0-5.2 (5.1-5.3)	115 (110)	118 (113)
320d Sport	190	7.1 (6.8)	54.3-53.3 (53.3-52.3) / 5.2-5.3 (5.3-5.4)	-	118 (113)
320d M Sport	190	7.1 (6.8)	55.4-52.3 (53.3-51.4) / 5.1-5.4 (5.3-5.5)	-	118 (113)
320d xDrive SE	190	(6.9)	(52.3-49.6) / (5.4-5.7)	(119)	(121)
320d xDrive Sport	190	(6.9)	(50.4-48.7) / (5.6-5.8)	-	(121)
320d xDrive M Sport	190	(6.9)	(50.4-48.7) / (5.6-5.8)	-	(121)
330d Sport	265	(5.5)	(47.9-46.3) / (5.9-6.1)	(133)	(138)
330d M Sport	265	(5.5)	(47.9-44.1) / (5.9-6.4)	(133)	(138)
330d xDrive Sport	265	(5.1)	(45.6-44.8) / (6.2-6.3)	(136)	(140)
330d xDrive M Sport	265	(5.1)	(45.6-42.2) / (6.2-6.7)	(136)	(140)

Prices and specifications

BMW (UK) Limited reserves the right to alter prices and specifications without notice. BMW (UK) Limited has made every effort to ensure the accuracy of information but does not accept liability for any errors or omissions.

**Key**  
- = Not available      \* = These figures are for comparison purposes and may not reflect real life driving results which depend on a number of factors including the starting charge of the battery, accessories fitted (post registration), variations in weather, driving styles and vehicle load. For plug-in hybrid vehicles they were obtained using a combination of battery power and fuel, for battery electric vehicles after the battery had been fully charged. Plug-in hybrid and battery electric vehicles require mains electricity for charging. The fuel consumption, CO<sub>2</sub> and electric range figures were determined according to a new test (WLTP). The CO<sub>2</sub> figures were translated back to the outgoing test (NEDC) and will be used to calculate vehicles tax on first registration. Only compare fuel consumption, CO<sub>2</sub> and electric range figures with other cars tested to the same technical procedure.      + = Wheel cluster 1 consists of the following 18" wheels: 1S6, 1PD, and the following 19" wheels: 1PT, 1PL. Wheel cluster 2 consists of the following 19" wheels: 1PK.      ^ = Wheel cluster 1 consists of the following 17" wheels: 1S3. Wheel cluster 2 consists of the following 18" wheels: 1UE, 1S6, 1PD, and the following 19" wheels: 1PT, 1PL.      Figures in () apply to cars with automatic transmission.

PRICING INFORMATION.

Model	Basic price (excluding VAT)	VAT 20%	RRP (including VAT)	On the road price	P11d value		BIK tax rate (2019 / 2020) <sup>1</sup>	VED band <sup>1</sup>	Insurance group
PETROL					Manual	Automatic			
320i SE	£26,241.67	£5,248.33	£31,490	£32,565	-	£32,340	(29%)	(G)	29
320i Sport	£27,408.33	£5,481.67	£32,890	£33,965	-	£33,740	(29%)	(G)	29
320i M Sport	£28,658.33	£5,731.67	£34,390	£35,465	-	£35,240	(29%)	(G)	30
320i xDrive SE	£27,533.33	£5,506.67	£33,040	£34,155	-	£33,890	(30%)	(H)	TBC
320i xDrive Sport	£28,700.00	£5,740.00	£34,440	£35,555	-	£35,290	(31%)	(H)	TBC
320i xDrive M Sport	£29,950.00	£5,990.00	£35,940	£37,055	-	£36,790	(31%)	(H)	TBC
330i Sport	£30,558.33	£6,111.67	£36,670	£37,785	-	£37,520	(30%)	(H)	32
330i M Sport	£31,808.33	£6,361.67	£38,170	£39,285	-	£39,020	(30%)	(H)	32
330e SE	£30,808.33	£6,161.67	£36,970	£37,875	-	£37,820	(16%)	(B)	TBC
330e Sport	£31,975.00	£6,395.00	£38,370	£39,275	-	£39,220	(16%)	(B)	TBC
330e M Sport	£32,562.50	£6,512.50	£39,075	£39,980	-	£39,925	(16%)	(B)	TBC

DIESEL									
318d SE	£26,216.67	£5,243.33	£31,460	<b>£32,575</b>	£32,310	£33,860	30% (29%)	G (F)	25
318d Sport	£27,383.33	£5,476.67	£32,860	<b>£33,975</b>	£33,710	£35,260	31% (30%)	G (G)	25
318d M Sport	£28,633.33	£5,726.67	£34,360	<b>£35,475</b>	£35,210	£36,760	31% (30%)	G (G)	26
320d SE	£27,183.33	£5,436.67	£32,620	<b>£33,735</b>	£33,470	£35,160	31% (30%)	G (F)	28
320d Sport	£28,350.00	£5,670.00	£34,020	<b>£35,135</b>	£34,870	£36,560	31% (30%)	G (G)	29
320d M Sport	£29,600.00	£5,920.00	£35,520	<b>£36,635</b>	£36,370	£38,060	31% (30%)	G (G)	29
320d xDrive SE	£29,841.67	£5,968.33	£35,810	<b>£36,925</b>	-	£36,660	(31%)	(G)	30
320d xDrive Sport	£31,008.33	£6,201.67	£37,210	<b>£38,325</b>	-	£38,060	(32%)	(G)	30
320d xDrive M Sport	£32,258.33	£6,451.67	£38,710	<b>£39,825</b>	-	£39,560	(32%)	(G)	31
330d Sport	£32,191.67	£6,438.33	£38,630	<b>£40,065</b>	-	£39,480	(34%)	(H)	38
330d M Sport	£33,441.67	£6,688.33	£40,130	<b>£41,565</b>	-	£40,980	(34%)	(H)	38
330d xDrive Sport	£33,441.67	£6,688.33	£40,130	<b>£41,565</b>	-	£40,980	(35%)	(H)	TBC
330d xDrive M Sport	£34,691.67	£6,938.33	£41,630	<b>£43,065</b>	-	£42,480	(35%)	(H)	TBC

VED rates

Annual VED (second year onwards) is £450 for cars costing over £40,000 and is payable for five years. VED rates for brand new cars are determined by their CO<sub>2</sub> emissions figure. First year VED applies to the first year of ownership. Annual VED rates apply thereafter. The new BMW 3 Series Saloon models fall into one of the categories listed below:

CO <sub>2</sub> emissions (g/km)	Band B 1-50	Band F 101-110	Band G 111-130	Band H 131-150
First year VED (petrol)	-	-	£170	£210
First year VED (alternative)	£0	-	-	-
First year VED (diesel)	-	£170	£210	£530
Annual VED (second year onwards)	£140	£140	£140	£140

**Key**  
<sup>1</sup> = BIK tax rate and VED band dependent on chosen optional equipment.      Figures in () apply to cars with automatic transmission.      Insurance group figures refer to 50 Group Rating System.

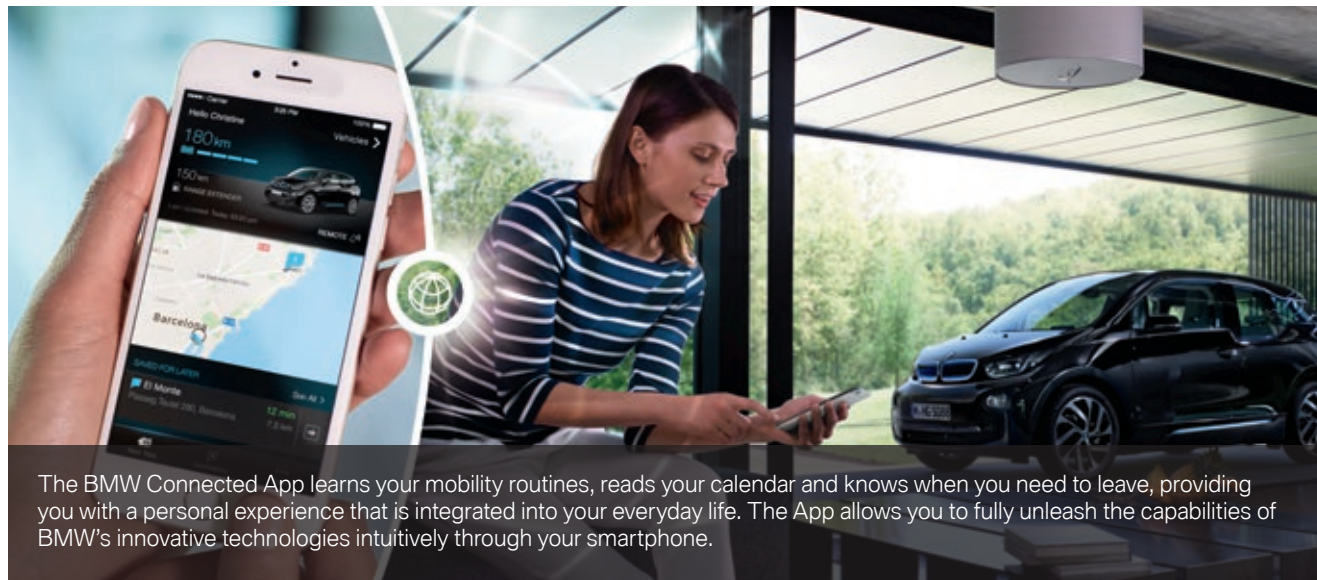
On the road price

The recommended on the road price includes:  
Delivery and BMW Emergency Service      £825  
Number plates      £25  
Vehicle first registration fee      £55  
First year Vehicle Excise Duty      See left



# The BMW Connected App.

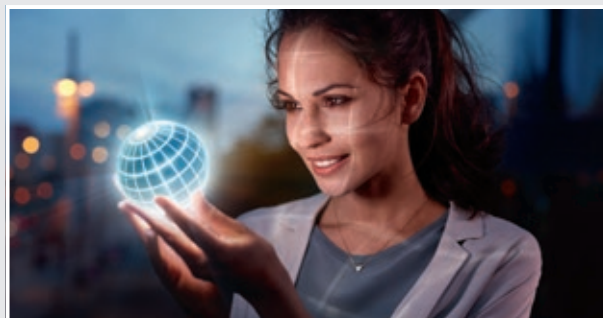
Your personal mobility assistant.



The BMW Connected App learns your mobility routines, reads your calendar and knows when you need to leave, providing you with a personal experience that is integrated into your everyday life. The App allows you to fully unleash the capabilities of BMW's innovative technologies intuitively through your smartphone.

Thanks to BMW ConnectedDrive, you are now more connected than ever before. Providing cutting edge innovations as standard, the BMW 3 Series Saloon comes with a host of connectivity features that enhance and perfectly accompany any journey. The range of services can be seen below:

## AVAILABLE ON THE NEW BMW 3 SERIES SALOON.



● **BMW Apps** makes it possible to operate smartphone apps, such as BMW Connected and web radio via the iDrive Controller and Control Display.<sup>1</sup>

● **BMW Connected+** provides the benefit of personalised services at all times.<sup>1,2</sup>

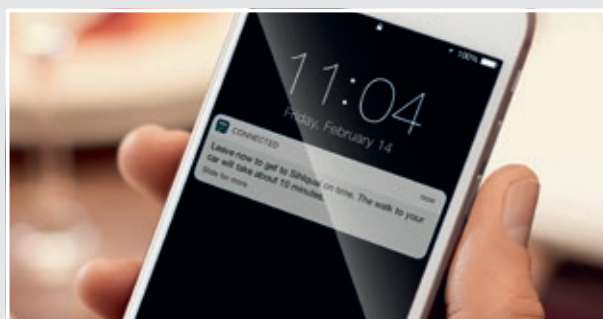
● **BMW Emergency Call** automatically creates a direct link to the local emergency services and sends details of your vehicle location and severity of the accident.<sup>3</sup>

● **BMW Online Services** provides the seamless integration of personalised BMW Connected mobility-related services.

● **BMW TeleServices** sends vehicle-specific service data, supports the processing of servicing appointments. It can also help you request help in the event of a breakdown.<sup>3</sup>

● **Intelligent Voice Control** understands natural speech as well as linguistic varieties and dialects thanks to off-board voice processing.<sup>4</sup>

● **Map Updates** automatically updates the maps in your BMW by downloading Over-the-Air via the on-board sim card or uploaded from a USB.<sup>1</sup>



## ● BMW LIVE COCKPIT PROFESSIONAL.

Additionally, M Sport and 330e models receive the brand new Intelligent Personal Assistant as standard.

(6U3)



● The **Intelligent Personal Assistant** is a revolutionary way to interact with your BMW and even has the ability to learn driver preferences. Intuitive operation options can be activated through voice command by saying "Hey BMW" or via direct-selection buttons, touch operation on the Control Display or through the optional BMW Gesture Control.<sup>4</sup>

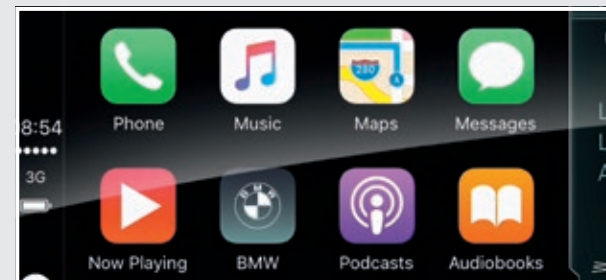
**Key**  
 ● = Standard ○ = Optional The information above is subject to change. <sup>1</sup> = Available and active for three years. Can be extended or renewed thereafter at an extra cost.  
<sup>2</sup> = BMW Connected+ is currently only available on SE and Sport models equipped with 6U2. Not available for M Sport models. <sup>3</sup> = Available and active for the lifetime of the vehicle.  
<sup>4</sup> = Available and active for one year. Can be extended or renewed thereafter at an extra cost. <sup>5</sup> = Available and active for three months. Can be extended or renewed thereafter at an extra cost.

# BMW ConnectedDrive.

More connected than ever before.

## ● CONNECTED PACKAGE PLUS.

(6C2)

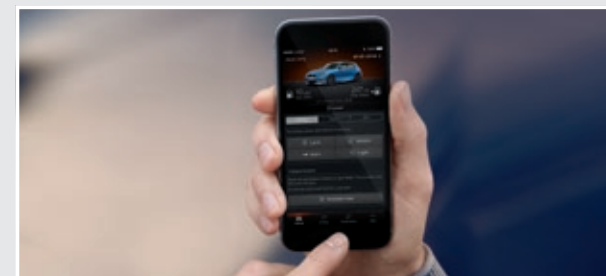


● **Apple CarPlay® preparation** enables wireless usage of your iPhone® in your vehicle via Apple CarPlay® and is operated via the vehicle's user interface.<sup>4</sup>

● **Concierge Services** connects the driver to a BMW Call Centre agent who is available as their around-the-clock personal assistant.<sup>1</sup>

● **Remote Services** allows you to remain connected to your vehicle wherever you are, send destinations, find your vehicle as well as locking and unlocking your doors.<sup>1</sup>

● **Real Time Traffic Information** supplies details about the location and duration of delays, also includes Hazard Preview.<sup>1</sup>



● **Connected Teaser**, for SE and Sport, offers a three month trial of **Microsoft Office 365**.<sup>5</sup>

## ● CONNECTED PACKAGE PROFESSIONAL.

(6C4)

In addition to Connected Package Plus, M Sport and 330e models receive the following:



● **Connected Navigation** makes route planning easier, anticipates road conditions and provides estimated time of arrival, plus multiple map views with split screen options.<sup>1</sup>

● **Intelligent Functionalities** creates customised rules and learns the driver's habits to enable greater comfort on every journey.<sup>1</sup>

● **Connected Parking** offers multi-storey and on-street parking availability in selected cities throughout the UK and other parts of Europe.



● **Connected Teaser**, for M Sport, offers a three month trial of **Microsoft Office 365**, **In-Car Experiences** and **Connected Music**.

## CONNECTED TEASER.

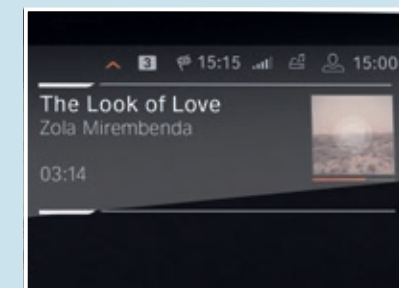
An exclusive three month trial tailored to whichever BMW 3 Series Saloon model you choose.



**Microsoft Office 365** synchronises emails, contacts and calendar entries plus Skype for Business calls can be joined with just one click.<sup>5</sup>



Exclusively to M Sport, **In-Car Experiences** includes care and experience modes to support you whilst on the road.<sup>5</sup>



Exclusively to M Sport, **Connected Music** provides a choice of music streaming directly to the vehicle via selected music providers.<sup>5</sup>



STANDARD AND OPTIONAL EQUIPMENT.



BMW EFFICIENT DYNAMICS

Active Air Stream Kidney Grille	●	●	●	●	●	●	●	●	●
Brake Energy Regeneration	●	●	●	●	●	●	●	●	●
ECO PRO mode	●	●	●	●	●	●	●	●	●
Electric Power Steering (EPS) with Servotronic	●	●	●	●	●	●	●	●	●
High-precision direct injection	●	●	●	●	●	●	●	●	●
Certain BMW EfficientDynamics features may be excluded depending on the optional equipment chosen. For full details please contact your local BMW Retailer.									

PAINTWORK

Non-metallic Available in Alpine White or Jet Black <sup>1</sup>	uni	●	●	●	●	●	●	●	●	●
Metallic Available in Black Sapphire, Blue Ridge Mountain <sup>1</sup> , Glacier Silver <sup>1</sup> , Mediterranean Blue <sup>1</sup> , Melbourne Red <sup>1</sup> , Mineral Grey, Mineral White, Portimao Blue <sup>2</sup> , Sunset Orange or Vermont Bronze <sup>1</sup>	met	○	○	○	○	○	○	-	-	-
		-	-	-	-	-	-	○	○	○

UPHOLSTERY

Cloth Available in Anthracite	EH	●	-	-	●	-	-	-	-	●
Sensatec leather Available in Black Only with ZSE	KC	○	-	-	○	-	-	-	-	○
Vernasca leather – Sport models Available in Black with Grey stitching, Black with Orange stitching, Cognac with Mocha stitching, Mocha with Night Blue stitching or Oyster with Grey stitching	MA	-	●	-	-	●	-	●	-	-
– M Sport models Available in Black with Grey stitching, Cognac with Mocha stitching, Mocha with Night Blue stitching or Oyster with Grey stitching		-	-	●	-	-	●	-	●	-
Available in Black with Blue stitching <sup>3</sup>		-	-	○	-	-	○	-	○	-

INTERIOR TRIMS

High-gloss Black	4AT	●	●	-	●	●	-	●	-	●
Aluminium Tetragon	4KK	-	-	●	-	-	●	-	●	-
Aluminium Mesh effect	4KL	-	○	-	-	○	-	○	-	-
		-	-	○	-	-	○	-	○	-
Finewood Ash Grey-Brown High-gloss	4KC	○	○	-	○	○	-	○	-	○
		-	-	○	-	-	○	-	○	-
Finewood Oak grain, open-pored	4KA	○	○	-	○	○	-	○	-	○
		-	-	○	-	-	○	-	○	-

330e Sport	330e M Sport	318d SE	318d Sport	318d M Sport	320d SE	320d Sport	320d M Sport	320d xDrive SE	320d xDrive Sport	320d xDrive M Sport	330d Sport	330d M Sport	330d xDrive Sport	330d xDrive M Sport	Price
------------	--------------	---------	------------	--------------	---------	------------	--------------	----------------	-------------------	---------------------	------------	--------------	-------------------	---------------------	-------

●	●	●	●	●	●	●	●	●	●	●	●	●	●	●	Std
●	●	●	●	●	●	●	●	●	●	●	●	●	●	●	Std
●	●	●	●	●	●	●	●	●	●	●	●	●	●	●	Std
●	●	●	●	●	●	●	●	●	●	●	●	●	●	●	Std
●	●	-	-	-	-	-	-	-	-	-	-	-	-	-	Std

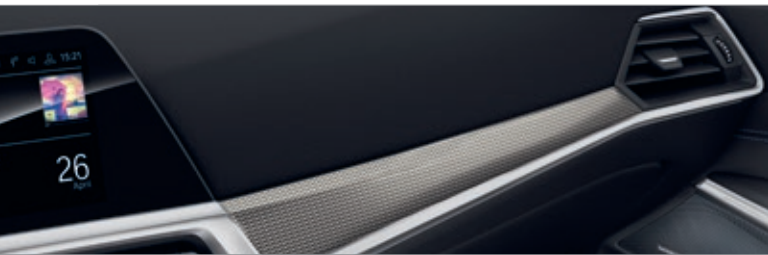
●	●	●	●	●	●	●	●	●	●	●	●	●	●	●	Std
-	-	○	○	○	○	○	○	○	○	○	-	-	-	-	£670
○	○	-	-	-	-	-	-	-	-	-	○	○	○	○	£0

-	-	●	-	-	●	-	-	●	-	-	-	-	-	-	Std
-	-	○	-	-	○	-	-	○	-	-	-	-	-	-	n/a*
●	-	-	●	-	-	●	-	-	●	-	●	-	●	-	Std
-	●	-	-	●	-	-	●	-	-	●	-	●	-	●	Std
-	○	-	-	○	-	-	○	-	-	○	-	○	-	○	£500

●	-	●	●	-	●	●	-	●	●	-	●	-	●	-	Std
-	●	-	-	●	-	-	●	-	-	●	-	●	-	●	Std
○	-	-	○	-	-	○	-	-	○	-	○	-	○	-	£150
-	○	-	-	○	-	-	○	-	-	○	-	○	-	○	£0
○	-	○	○	-	○	○	-	○	○	-	○	-	○	-	£300
-	○	-	-	○	-	-	○	-	-	○	-	○	-	○	£150
○	-	○	○	-	○	○	-	○	○	-	○	-	○	-	£300
-	○	-	-	○	-	-	○	-	-	○	-	○	-	○	£150

Key  
● = Standard   ○ = Optional   - = Not available   \* = Exclusively available as part of a package, please refer to page 25-26 for further details.   Only with = these options must be ordered together.   <sup>1</sup> = Exclusively available on SE and Sport models.   <sup>2</sup> = Exclusively available on M Sport models.   <sup>3</sup> = Only with 4AW.





TRANSMISSIONS

Automatic transmission	205	-	-	-	-	-	-	-	-	-
Sport automatic transmission with gearshift paddles	2TB	●	●	●	●	●	●	●	●	●

STEERING AND CHASSIS

BMW Mobility kit Only with 1S3 / 1PK	2VC	●	-	-	●	-	-	-	○	●
M Sport suspension	704	-	-	●	-	-	●	-	●	-
Run-flat tyres Only with 1UE / 1S6 / 1PD / 1PT / 1PL	258	○	●	●	○	●	●	●	●	○
Space-saver spare wheel	300	○	○	○	○	○	○	○	○	-
Tyre pressure monitoring	2VB	●	●	●	●	●	●	●	●	●
Variable Sport steering Only with ZMS	2VL	-	-	●	-	-	●	-	●	-

EXTERIOR EQUIPMENT

Exterior mirrors – folding, with anti-dazzle	430	●	●	●	●	●	●	●	●	●
Exterior trim, High-gloss Shadowline	760	-	●	●	●	●	●	-	●	
Towbar, fully electric	3AC	○	○	○	○	○	○	○	○	○

INTERIOR EQUIPMENT

Acoustic glazing	3KA	●	●	●	●	●	●	●	●	●
Air conditioning, automatic with three-zone control	534	●	●	●	●	●	●	●	●	●
Ambient lighting	4UR	●	●	●	●	●	●	●	●	●
Extended Storage	493	○	○	○	○	○	○	○	○	○
Headlining, Anthracite	775	-	-	●	-	-	●	-	●	-
Instrument panel in Sensatec Only with MANL	4AW	-	-	○	-	-	○	-	○	-
Interior rear-view mirror with automatic anti-dazzle function	431	●	●	●	●	●	●	●	●	●
Lumbar support, driver and passenger	488	○	○	○	○	○	○	○	○	○
Split-folding seats, rear Only with ZSE	465	●	●	●	●	●	●	●	●	○
Sport seats, front	481	-	●	●	-	●	●	●	●	-
Steering wheel heating	248	○	○	○	○	○	○	○	○	○
Sun protection glass	420	○	○	○	○	○	○	○	○	○
M Leather steering wheel	710	-	-	●	-	-	●	-	●	-
Sport leather steering wheel, three-spoke	255	●	●	-	●	●	-	●	-	●

330e Sport	330e M Sport	318d SE	318d Sport	318d M Sport	320d SE	320d Sport	320d M Sport	320d xDrive SE	320d xDrive Sport	320d xDrive M Sport	330d Sport	330d M Sport	330d xDrive Sport	330d xDrive M Sport	Price
------------	--------------	---------	------------	--------------	---------	------------	--------------	----------------	-------------------	---------------------	------------	--------------	-------------------	---------------------	-------

-	-	○	○	○	-	-	-	-	-	-	-	-	-	-	£1,550
●	●	-	-	-	○	○	○	●	●	●	●	●	●	●	£1,690

-	-	●	-	-	●	-	-	●	-	-	-	○	-	○	£0
-	-	-	-	●	-	-	●	-	-	●	-	●	-	●	Std
●	●	○	●	●	○	●	●	○	●	●	●	●	●	●	£0
-	-	○	○	○	○	○	○	○	○	○	○	○	○	○	£190
●	●	●	●	●	●	●	●	●	●	●	●	●	●	●	Std
-	○	-	-	●	-	-	●	-	-	●	-	●	-	●	n/a*

●	●	●	●	●	●	●	●	●	●	●	●	●	●	●	Std
●	●	-	●	●	-	●	-	●	●	●	●	●	●	●	Std
○	○	○	○	○	○	○	○	○	○	○	○	○	○	○	£850

●	●	●	●	●	●	●	●	●	●	●	●	●	●	●	Std
●	●	●	●	●	●	●	●	●	●	●	●	●	●	●	Std
●	●	●	●	●	●	●	●	●	●	●	●	●	●	●	Std
○	○	○	○	○	○	○	○	○	○	○	○	○	○	○	£190
-	●	-	-	●	-	-	●	-	-	●	-	●	-	●	Std
-	○	-	-	○	-	-	○	-	-	○	-	○	-	○	£500
●	●	●	●	●	●	●	●	●	●	●	●	●	●	●	Std
○	○	○	○	○	○	○	○	○	○	○	○	○	○	○	£265
●	●	●	●	●	●	●	●	●	●	●	●	●	●	●	n/a*
●	●	-	●	●	-	●	-	●	●	●	●	●	●	●	Std
○	○	○	○	○	○	○	○	○	○	○	○	○	○	○	£170
○	○	○	○	○	○	○	○	○	○	○	○	○	○	○	£320
-	●	-	-	●	-	-	●	-	-	●	-	●	-	●	Std
●	-	●	●	-	●	●	-	●	-	●	-	●	-	●	Std

Key  
● = Standard   ○ = Optional   - = Not available   Only with = these options must be ordered together.   \* = Exclusively available as part of a package, please refer to page 25-26 for further details.





Packages provide an intelligent selection of individual options at a lower combined price, as well as contributing to the resale value of the vehicle. Further options can still be specified even when a package is chosen.

<b>COMFORT PACKAGE</b>	ZGM									
Comprises:										
– 248 Steering wheel heating										
– 316 Automatic tailgate operation										
– 322 Comfort Access with smart-opener										
– 493 Extended storage <sup>1, 2</sup>										
<b>M SPORT PLUS PACKAGE</b>	ZMS	-	-		-	-		-		
Comprises:										
– 1PL 19" M Double-spoke style 791 M wheels, Bicolour Jet Black with mixed tyres										
– 2VF Adaptive M suspension										
– 420 Sun protection glass <sup>1</sup>										
– 4GQ M seat belts										
– 754 M rear spoiler										
– 7M9 BMW Individual High-gloss Shadowline with extended contents										
Differing content:										
– 2NH M Sport braking system										
– 2T4 M Sport differential										
– 2VL Variable sports steering										
<b>PREMIUM PACKAGE</b>	ZGK									
Comprises:										
– 403 Electric glass sunroof										
– 459 Seat adjustment – front, electric with driver memory										
– 488 Lumbar support, driver and front passenger										
<b>SE PLUS PACKAGE</b>	ZSE		-	-		-	-	-	-	
Comprises:										
– KC Black Sensatec leather upholstery										
Differing content:										
– 1AG Larger fuel tank (59 litres) <sup>1</sup>										
– 494 Heated seats, front										
– 465 Split-folding rear seats										
<b>TECHNOLOGY PACKAGE</b>	Z0J			-					-	
Comprises:										
For SE and Sport models:										
– 610 Head-up Display										
– 676 Loudspeaker system – BMW Advanced										
– 6NW Enhanced Bluetooth with wireless charging <sup>1</sup>										
– 6WD WiFi hotspot preparation <sup>3, 4</sup>										
For M Sport models:										
– 610 Head-up Display										
– 688 Loudspeaker system – harman/kardon <sup>1</sup>										
– 6U8 BMW Gesture Control										
– 6NW Enhanced Bluetooth with wireless charging <sup>1</sup>										
– 6WD WiFi hotspot preparation <sup>3, 4</sup>										
<b>VISIBILITY PACKAGE</b>	Z0C									
Comprises:										
– 5AC High-beam Assistant										
– 5AZ BMW Laserlights										

[illegible]

### Key

● = Standard   ○ = Optional   - = Not available   \* = Exclusively available as part of a package.   <sup>1</sup> = Available as a single option.   <sup>2</sup> = When combined with option 300, the nets, 12V socket and multi-function hook in the luggage compartment are removed.   <sup>3</sup> = Data subscription costs apply and must be purchased separately.   <sup>4</sup> = Only with 6NWX.









AUDIO AND COMMUNICATION

<b>BMW Emergency Call<sup>1</sup></b>	6AF	●	●	●	●	●	●	●	●	●
<b>BMW Live Cockpit Plus</b> Comprises: – 8.8" Touch Display – BMW Connected+ <sup>2,3</sup> – BMW Navigation system – BMW Operating System 6.0 – BMW TeleServices <sup>1</sup> – iDrive controller with Touch Function – Intelligent Voice Control <sup>3</sup> – Over the Air Map updates <sup>3</sup> – USB Map updates <sup>3</sup> Further information can be found on pages 17-18	6U2	●	●	-	●	●	-	●	-	-
<b>BMW Live Cockpit Professional</b> Comprises the full functionality of BMW Live Cockpit Plus (6U2) <sup>4</sup> , plus: – 10.25" Touch Display – BMW Operating System 7.0 – Intelligent Personal Assistant Further information can be found on pages 17-18	6U3	-	-	●	-	-	●	-	●	●
<b>BMW Online Services<sup>2,3</sup></b>	6AK	●	●	●	●	●	●	●	●	●
<b>BMW TeleServices<sup>1</sup></b>	6AE	●	●	●	●	●	●	●	●	●
<b>Connected Package Plus</b> Comprises: – Apple CarPlay <sup>®</sup> preparation <sup>2, 5, 6</sup> – Concierge Services <sup>2,3</sup> – Connected Office <sup>8</sup> – Real Time Traffic Information <sup>2,3,9</sup> – Remote Services <sup>3</sup> Further information can be found on pages 17-18	6C2	●	●	-	●	●	-	●	-	-
<b>Connected Package Professional</b> Comprises the full functionality of Connected Package Plus (6C2), plus: – Connected Navigation <sup>2,3</sup> – Connected Parking <sup>2,3</sup> – Connected Teaser <sup>7,8</sup> – Intelligent Functionalities <sup>2,3</sup> Further information can be found on pages 17-18	6C4	-	-	●	-	-	●	-	●	●
<b>Enhanced Bluetooth with wireless charging</b>	6NW	○	○	○	○	○	○	○	○	○
<b>HiFi loudspeaker system</b> Only with Z0J	676	○	○	-	○	○	-	○	●	○
<b>Loudspeaker system – harman/kardon</b>	688	-	-	○	-	-	○	-	○	-
<b>WiFi hotspot preparation</b> Only with 6NW	6WD	○	○	○	○	○	○	○	○	○

<b>330e Sport</b>	<b>330e M Sport</b>																
<b>318d SE</b>	<b>318d Sport</b>	<b>318d M Sport</b>	<b>320d SE</b>	<b>320d Sport</b>	<b>320d M Sport</b>	<b>320d xDrive SE</b>	<b>320d xDrive Sport</b>	<b>320d xDrive M Sport</b>	<b>330d Sport</b>	<b>330d M Sport</b>	<b>330d xDrive Sport</b>	<b>330d xDrive M Sport</b>					
																	<b>Price</b>

●	●	●	●	●	●	●	●	●	●	●	●	●	●	●	●	●	Std
-	-	●	●	-	●	●	-	●	●	-	●	-	●	-	●	-	Std
●	●	-	-	●	-	-	●	-	-	●	-	●	-	●	-	●	Std
●	●	●	●	●	●	●	●	●	●	●	●	●	●	●	●	●	Std
●	●	●	●	●	●	●	●	●	●	●	●	●	●	●	●	●	Std
-	-	●	●	-	●	●	-	●	●	-	●	-	●	-	●	-	Std
●	●	-	-	●	-	-	●	-	-	●	-	●	-	●	-	●	Std
○	○	○	○	○	○	○	○	○	○	○	○	○	○	○	○	○	£350
○	-	○	○	-	○	○	-	○	○	-	○	-	○	-	○	-	n/a*
-	○	-	-	○	-	-	○	-	-	○	-	○	-	○	-	○	£820
○	○	○	○	○	○	○	○	○	○	○	○	○	○	○	○	○	n/a^

**Key**  
● = Standard   ○ = Optional   - = Not available   \* = Exclusively available as part of a package.   ^ = Only with 6NW.   <sup>1</sup> = Active and available for the lifetime of the vehicle.  
<sup>2</sup> = Requires a free BMW ConnectedDrive account.   <sup>3</sup> = Active for 3 years, renewable thereafter at an additional cost.   <sup>4</sup> = BMW Connected+ is currently only available on SE and Sport models fitted with 6U2. Not available for M Sport models.   <sup>5</sup> = Available and active for one year, can be extended or renewed thereafter at an additional cost.   <sup>6</sup> = Functions using a data connection will use data from the SIM card in the iPhone<sup>®</sup>. Additional data charges may be applied by the mobile network provider. Compatibility and functions may vary due to the model year of the iPhone<sup>®</sup> and the version of software installed on it.   <sup>7</sup> = Includes Connected Music, Microsoft Office 365 and In-Car Experiences. For further details please refer to pages 17-18.   <sup>8</sup> = Available and active for three months. Can be extended or renewed thereafter at an extra cost.   <sup>9</sup> = Includes Hazard Preview.







# BMW PAY MONTHLY SERVICING & TRACKSTAR.

## SERVICING MADE SIMPLE.

Planning for the road ahead has never been easier. With the BMW Pay Monthly Service Plan<sup>1</sup> you can remove the uncertainty often associated with car servicing costs by spreading them monthly, much like you would your household bills. Our Pay Monthly service plan covers two services and any unused credit can be transferred to another BMW if you decide to switch unexpectedly. As part of the Pay Monthly plan you will also receive a number of added extras including:

- Fluid top ups
- An MOT
- A Wash & Vac each time you visit
- Seasonal health checks
- Free Sat Nav Map updates

Get the quality service and parts you expect from BMW with a fixed monthly payment. Give your BMW the care and attention it deserves from the experts that made it.

**Price: £25 per month for 36 months**

Please contact your preferred BMW Centre for further information.

## BMW TRACKSTAR.

Locate and recover your vehicle if it is stolen with BMW Trackstar or BMW Trackstar Advance. Benefits include:

- 24/7 Trackstar Monitoring Centre
- Thatcham accredited
- Integrated motion sensor
- Pan-European protection

**BMW Trackstar price from: £399<sup>2</sup>**

**BMW Trackstar Advance price from: £649<sup>2</sup>**



<sup>1</sup> Participating Retailers only. Two services must be claimed within four years or 40,000 miles, whichever occurs soonest. <sup>2</sup> = Price excludes subscription. Please consult your preferred BMW Centre for further details. Content correct at time of going to print. Prices subject to change.



## BMW M PERFORMANCE ACCESSORIES.

The Ultimate Driving Machine has just been taken to the next level. With BMW M Performance Accessories available on the new BMW 3 Series Saloon, expert craftsmanship and engineering is now combined with an even more striking design.

A range of eye-catching alloy wheels are available for the new BMW 3 Series Saloon.



20" M Performance light alloy Y-spoke style 795 M wheels in Jet Black are shown here.

The Carbon rear spoiler underlines the vehicle's dynamic appearance.



Rear spoiler, Carbon. Also available in matt Black PU (can be painted).

A dynamic and striking design, thanks to the BMW M Performance Accessories available on the new BMW 3 Series Saloon. From the sporty M Performance Rear Diffuser (in Carbon or Black PU) to the Mirror Covers in Carbon, it is clear that this vehicle doesn't understand the meaning of the word compromise. Its strong athletic look strengthens the distinctive profile of the new BMW 3 Series Saloon with nothing lost in translation.



A range of M Performance Accessories will also be available for the interior, including M Performance Steering Wheel and Interior Trim.



The Front Splitter and Carbon Front Splitter Pro enhance the front of the new BMW 3 Series Saloon.



Front Splitter and Carbon Front Splitter Pro.



# THE NEW BMW M340i XDRIVE SALOON.

Expected to be available from August 2019, the BMW M340i xDrive Saloon will come with a host of standard equipment. For further details, please speak to your local BMW Retailer





CODE GLOSSARY.

1AG	Larger fuel tank	488	Lumbar support, driver and front passenger
205	Automatic transmission	493	Extended storage
248	Steering wheel heating	494	Heated seats, front
255	Sport leather steering wheel, three-spoke	4AT	Interior trim, High-gloss Black
258	Run-flat tyres	4AW	Instrument panel in Sensatec
2NH	M Sport braking system	4GQ	M seat belts
2T4	M Sport differential	4KA	Interior trim, Finewood Oak grain, open-pored
2TB	Sport automatic transmission with gearshift paddles	4KC	Interior trim, Finewood Ash Grey-Brown High-gloss
2VB	Tyre pressure monitoring	4KK	Interior trim, Aluminium Tetragon
2VC	BMW Mobility kit	4KL	Interior trim, Aluminium Mesh effect
2VF	Adaptive M suspension	4UR	Ambient lighting
2VL	Variable Sport steering	534	Air conditioning, automatic with three-zone control
300	Space-saver spare wheel	5A1	LED foglights
316	Automatic tailgate operation	5A4	Adaptive LED headlights
322	Comfort Access with smart-opener	5AC	High-beam Assistant
3AC	Towbar, fully electric	5AQ	Active Guard Plus
3KA	Acoustic glazing	5AU	Driving Assistant Professional
403	Electric glass sunroof	5AZ	BMW Laserlights
420	Sun protection glass	5DM	Parking Assistant
430	Exterior mirrors – folding, with anti-dazzle	5DN	Parking Assistant Plus
431	Interior rear-view mirror with automatic anti-dazzle function	610	Head-up Display
459	Seat adjustment – front, electric with driver memory	688	Loudspeaker system – harman/kardon
465	Split-folding seats, rear	6AE	BMW TeleServices
481	Sports seats, front	6AF	BMW Emergency Call

6AK	BMW Online Services
6C2	Connected Package Plus
6C4	Connected Package Professional
6DR	Driver Recorder
6NW	Enhanced Bluetooth with wireless charging
6U2	BMW Live Cockpit Plus
6U3	BMW Live Cockpit Professional
6U8	BMW Gesture Control
6WD	WiFi Hotspot preparation
704	M Sport suspension
710	M Leather steering wheel
754	M rear spoiler
760	Exterior trim, High-gloss Shadowline
775	Headlining, Anthracite
7M9	High-gloss Shadowline with extended contents
EH	Cloth upholstery
KC	Sensatec leather upholstery
MA	Vernasca leather upholstery
met	Metallic paintwork
uni	Non-metallic paintwork
Z0C	Visibility package
Z0J	Technology package
ZGK	Premium package
ZGM	Comfort package
ZMS	M Sport Plus package
ZSE	SE Plus package

BMW CONNECTED DRIVE SERVICES.

BMW ConnectedDrive keeps driver and vehicle connected with the outside world. Digital services, driver-focused technologies and driver assistance systems provide more comfort, more entertainment and more safety. Increase your driving pleasure – with BMW ConnectedDrive.

For further information on BMW ConnectedDrive and the General Terms and Conditions of Service for ConnectedDrive, please see: [www.bmw.co.uk/connecteddrive-information](http://www.bmw.co.uk/connecteddrive-information)

The BMW ConnectedDrive Hotline is available on: +44 (0) 800 561 0555 from Monday to Friday 8am – 7pm and Saturday to Sunday 9am – 5pm.



<b>General information</b> BMW (UK) Ltd, Summit ONE, Summit Avenue, Farnborough, Hampshire, GU14 0FB (hereinafter referred to as “BMW”) provides the customer with certain vehicle-related information and assistance functions (hereinafter called “Services”) under the name of “BMW ConnectedDrive”. BMW collects, stores or processes car-related data in compliance with applicable law and only to the extent necessary to provide the Services. BMW does not collect, store or process personal data in course of the Services – except where this is explicitly stated in the following description of the individual Services. In the case of Services that require personal data to be collected, stored and processed so that such Services can actually be provided, BMW informs customers of this in advance by providing this data protection notice The Services are provided by means of a SIM card installed in the vehicle.	
<b>BMW ConnectedDrive Services duration</b>	
Connected Music	3 month trial
Microsoft Office 365	3 month trial
In-Car Experiences	3 month trial
Apple CarPlay® Preparation	1 year
Apps	3 years
BMW Connected+	3 years
BMW Online Services	3 years
Concierge Services	3 years
Connected Parking	3 years
Intelligent Voice Control	3 years
Intelligent Functionalities	3 years
Map Updates	3 years
Real Time Traffic Information	3 years
Remote Services	3 years
BMW Emergency Call	Active for the lifetime of the vehicle
BMW TeleServices	Active for the lifetime of the vehicle
Legal Emergency Call	Active for the lifetime of the vehicle.
<b>Deactivation</b> The customer may have the BMW ConnectedDrive Services “TeleServices” (6AE) and “BMW Emergency Call” (6AC) deactivated at any time at an authorised BMW Centre, a regional BMW branch or an authorised BMW workshop. Deactivation of this Service will also deactivate the SIM card installed in the vehicle. <b>This results in the Emergency Call in the vehicle also not functioning.</b> The other Services can also be deactivated by the customer (from August 2014) via the BMW ConnectedDrive Customer Portal (“My BMW ConnectedDrive”).	





**The Ultimate  
Driving Machine**

More about BMW  
Tel. 0800 325 600  
[www.bmw.co.uk](http://www.bmw.co.uk)



BMW UK on Facebook  
[www.facebook.com/bmwuk](http://www.facebook.com/bmwuk)

Valid from July 2019.